

M23 12+PE Female-solder(termination)

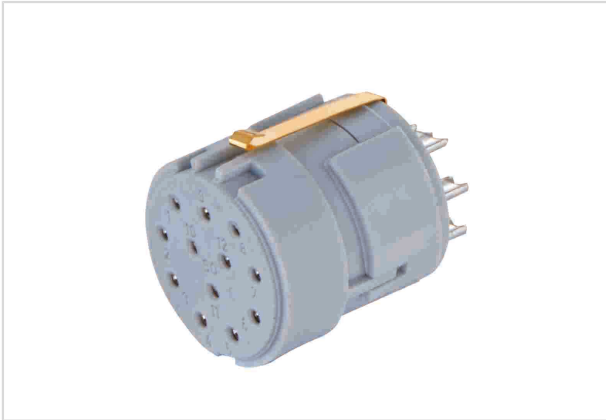


Image is for illustration purposes only. Please refer to product description.

Part number	09 15 112 2722
Specification	M23 12+PE Female-solder(termination)
HARTING eCatalogue	https://b2b.harting.com/09151122722

Identification

Category	Inserts
Series	Circular connectors M23
Identification	Signal
Element	Inserts

Version

Termination method	Solder termination
Gender	Female
Number of contacts	11
PE contact	Yes

Technical characteristics

Conductor cross-section	1 mm ² max.
Rated current	8 A
Rated voltage	200 V
Rated impulse voltage	2.5 kV
Pollution degree	3
Insulation resistance	>10 ¹⁰ Ω
Limiting temperature	-40 ... +125 °C
Mating cycles	≥500

Material properties

Material (insert)	Polyamide (PA)
-------------------	----------------



Pushing Performance

Material properties

Colour (insert)	Grey
Material (contacts)	Copper alloy
Surface (contacts)	Gold plated
Material flammability class acc. to UL 94	V-0
RoHS	compliant with exemption
RoHS exemptions	6(c): Copper alloy containing up to 4 % lead by weight
ELV status	compliant with exemption
China RoHS	50
REACH Annex XVII substances	No
REACH ANNEX XIV substances	No
REACH SVHC substances	Yes
REACH SVHC substances	Lead

Specifications and approvals

UL / CSA	UL 1977 ECBT2.E235076
----------	-----------------------

Commercial data

Packaging size	5
Net weight	9.4 g
Country of origin	Germany
European customs tariff number	85366990
eCl@ss	27440223 Contact insert for circular connectors