

# Product Technical Sheet

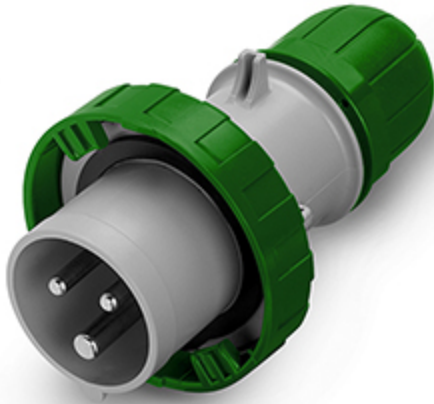
22 Aug 2023 23:36



## 218.16332

### PLUG

16A 2P+E 2h >50V >300-500Hz Screw terminals



Product Approvals

TECHDATA		STANDARDS AND LAWS	
Commercial series	OPTIMA Series	EN 60309-1 (1999)	[European Standard] Plugs, socket-outlets and couplers for industrial purposes. Part 1: General requirements
Product type	PLUG	EN 60309-2 (1999)	[European Standard] Plugs, socket-outlets and couplers for industrial purposes. Part 2: Dimensional interchangeability requirements for pin and contact-tube accessories of harmonized configurations
Synthetical description	PLUG		
Mounting version	PORTABLE		
Rated current	16A	EN 60309-1/A1 (2007)	[European Standard] Plugs, socket-outlets and couplers for industrial purposes. Part 1: General requirements
Poles	2P+E	EN 60309-2/A1 (2007)	[European Standard] Plugs, socket-outlets and couplers for industrial purposes. Part 2: Dimensional interchangeability requirements for pin and contact-tube accessories of harmonized configurations
Hour position	2h		
Rated voltage (range)	50-200V	EN 60309-1/A2 (2012)	[European Standard] Plugs, socket-outlets and couplers for industrial purposes. - Part 1: General requirements
Rated voltage	>50V		
Working frequency	>300-500Hz	EN 60309-2/A2 (2012)	[European Standard] Plugs, socket-outlets and couplers for industrial purposes. - Part 2: Dimensional interchangeability requirements for pin and contact-tube accessories of harmonized configurations
Colour	GREEN		
Material	THERMOPLASTIC	DIRECTIVE LOW VOLTAGE 2014/35 /UE	[European Directives] Low Voltage Directive
Protection degree	Watertight		
Protection degree IP	IP66/IP67/IP69		
Protection degree IK	IK08		
Types of available outlets	STRAIGHT		
Terminals	Screw terminals		
Contact material	CuZn (brass)		

Surface treatment contacts	Nickel-plated
Cable entry	CABLE GLAND