

## Product Technical Sheet

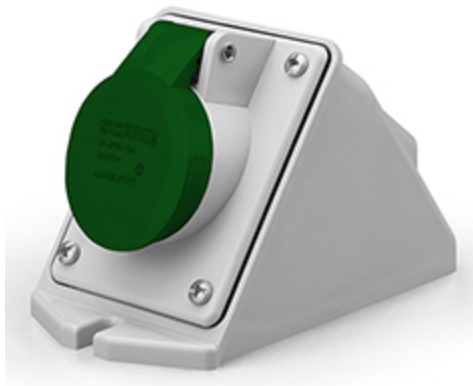
23 Aug 2023 16:58



# 530.016132

## SURFACE MOUNTING SOCKET

16A 3P 2h 20-25V 40-50V 300Hz Screw  
terminals



Product Approvals

TECHDATA		STANDARDS AND LAWS	
Product type	SURFACE MOUNTING SOCKET	EN 60309-1 (1999)	[European Standard] Plugs, socket-outlets and couplers for industrial purposes. Part 1: General requirements
Commercial series	IEC309 Series	EN 60309-2 (1999)	[European Standard] Plugs, socket-outlets and couplers for industrial purposes. Part 2: Dimensional interchangeability requirements for pin and contact-tube accessories of harmonized configurations
Synthetical description	SURFACE MOUNTING SOCKET		
Mounting version	SURFACE MOUNTING		
Rated current	16A		
Poles	3P		
Hour position	2h		
Rated voltage (range)	0-50V		
Rated voltage	20-25V		
Rated voltage	40-50V		
Working frequency	300Hz		
Colour	GREEN		
Material	THERMOPLASTIC		
Protection degree	Splash proof		
Protection degree IP	IP44		
Types of available outlets	ANGLED		
Terminals	Screw terminals		
Contact material	CuZn (brass)		

Cable entry

M25X1,5