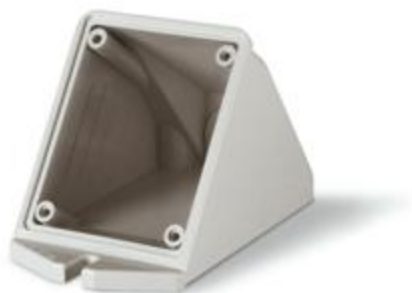


570.0132.32

SURFACE MOUNTING BOX

ANGLED 32A M32X1,5 IP66/IP67/IP69
84x106mm



Product Approvals

TECHDATA		STANDARDS AND LAWS	
Protection degree	Watertight	EN 60309-1 (1999)	[European Standard] Plugs, socket-outlets and couplers for industrial purposes. Part 1: General requirements
Commercial series	DOMO Series	EN 60309-1/A1 (2007)	[European Standard] Plugs, socket-outlets and couplers for industrial purposes. Part 1: General requirements
Product type	Accessory	IEC 60309-1 (2005)	[International Standard] Plugs, socket-outlets and couplers for industrial purposes. Part 1: General requirements
Synthetical description	SURFACE MOUNTING BOX	EN 60309-1/A2 (2012)	[European Standard] Plugs, socket-outlets and couplers for industrial purposes. - Part 1: General requirements
Material	THERMOPLASTIC	DIRECTIVE LOW VOLTAGE 2014/35 /UE	[European Directives] Low Voltage Directive
Types of available outlets	ANGLED		
Protection degree IP	IP66/IP67/IP69		
Cable entry	M32X1,5		
Rated current	32A		
Suitable for	84x106mm		
Colour	GREY		