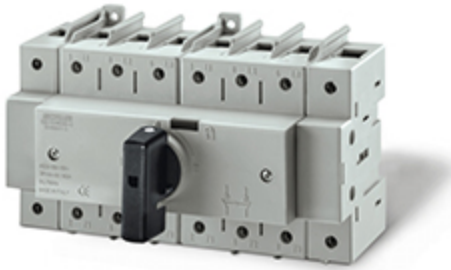


590.YA1605B-C

CHANGE OVER SWITCH

160A 3P+N C3 BOX (B)



Product Approvals

TECHDATA		STANDARDS AND LAWS	
Commercial series	COMMAND Series	EN 60947-3 (2009)	[European Standard] Low-voltage switchgear and controlgear - Part 3: Switches, disconnectors, switch-disconnectors and fuse-combination units
Product type	CHANGE OVER SWITCH	EN 60947-1 (2007)	[European Standard] Low-voltage switchgear and controlgear - Part 1: General rules
Synthetical description	CHANGE OVER SWITCH	EN 60947-1/A1 (2011)	[European Standard] Low-voltage switchgear and controlgear - Part 1: General rules
Material	THERMOPLASTIC	EN 60947-3/A1 (2012)	[European Standard] Low-voltage switchgear and controlgear - Part 3: Switches, disconnectors, switch-disconnectors and fuse-combination units
Type	BOX (B)	EN 60947-1/A2 (2014)	[European Standard] Low-voltage switchgear and controlgear - Part 1: General rules
Rated current	160A	EN 60947-3/A2 (2015)	[European Standard] Low-voltage switchgear and controlgear - Part 3: Switches, disconnectors, switch-disconnectors and fuse-combination units
Poles	3P+N	DIRECTIVE LOW VOLTAGE 2014/35 /UE	[European Directives] Low Voltage Directive
Switch size	C3		
Rated voltage	690V		